

Data Validation and Presentation



Falk Aupers
Senior Consultant
CORENA

Presenter

- ❑ Dipl. Phys. Falk Aupers
 - ❑ With CORENA since 2000
 - ❑ First S1000D experience in 2002
 - ❑ Senior Consultant
 - ❑ Leader of training courses in SGML/XML, XSLT, FOSI, S1000D, ATA iSpec2200, XMetaL and Arbortext Editor
 - ❑ Falk.Aupers@corena.com



Content

1. Introduction CORENA
2. Data Validation
 - Creating Shipdex data
 - Receiving Shipdex data
3. Data Presentation
 - Virtual Publication
 - Interactive Electronical Technical Publication (IETP)
4. Conclusion

Content

1. Introduction CORENA
2. Data Validation
 - Creating Shipdex data
 - Receiving Shipdex data
3. Data Presentation
 - Virtual Publication
 - Interactive Electronical Technical Publication (IETP)
4. Conclusion

CORENA

Provides Commercial-Off-The-Shelf IT Systems

and Services related to creation, publishing, and usage of:

- ❑ Technical Publications Data
- ❑ Computer Based Training

Specialists in S1000D, Shipdex, and iSpec2200

Established in 1991

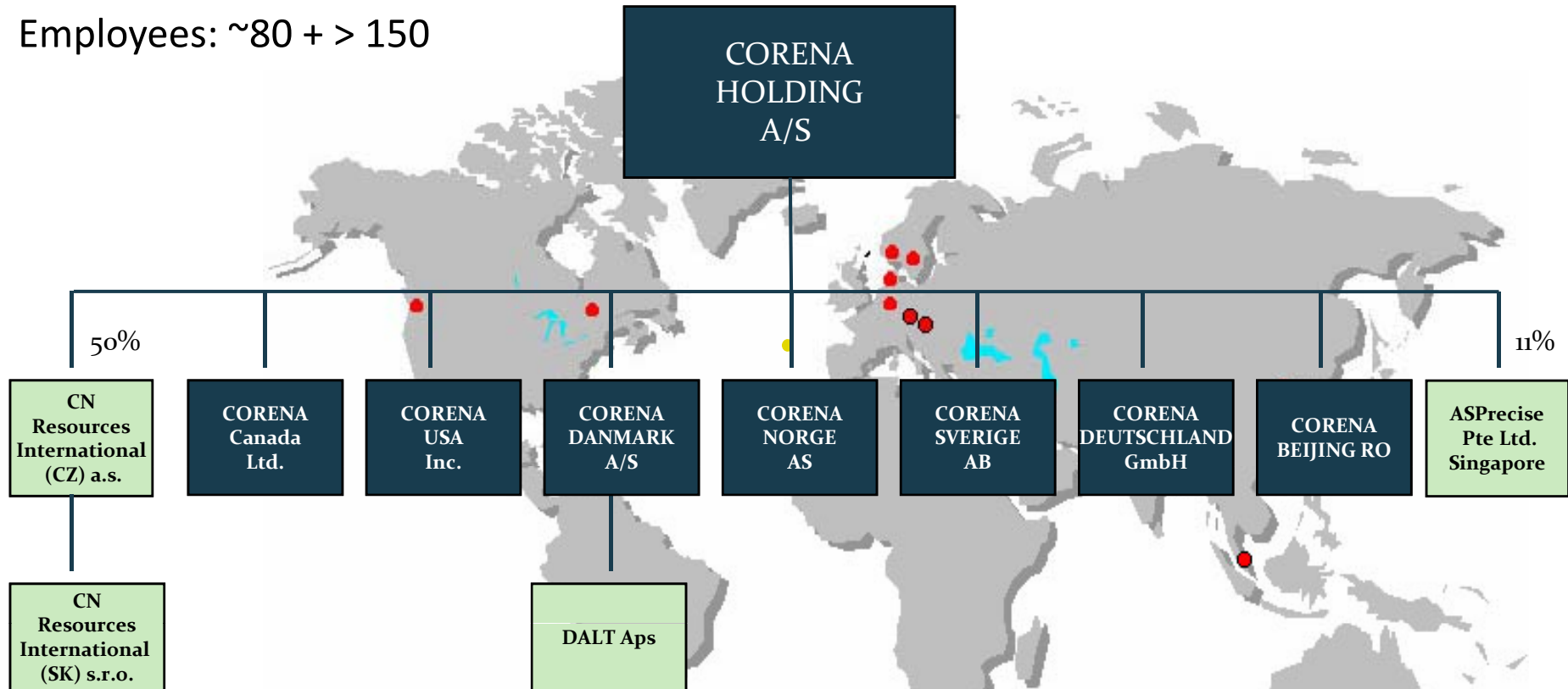
ISO 9001:2000 Certified

NATO Security Clearance



CORENA World Wide

Employees: ~80 + > 150



CORENA Business Segments



Solutions for
the maritime industry



CORENA
Products

Commercial-Off-The-
Shelf products
development S1000D,
ATA iSpec

CORENA
Academy

Product independent
training courses
teaching Implement-
ation and use of
international standards

CORENA
Consultancy
Services

Product independent
consultancy.
Business analysis.
Requirements studies.

CORENA

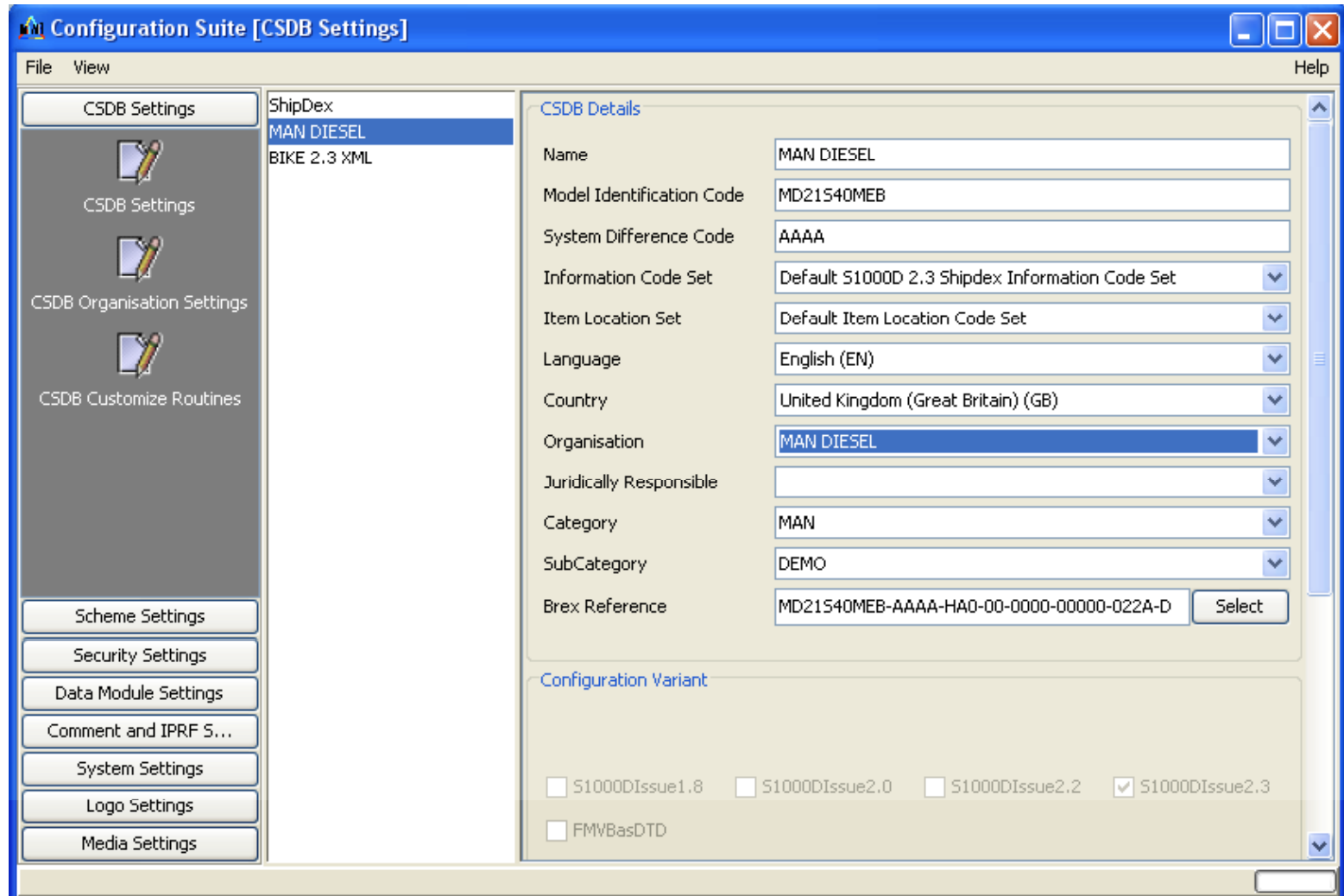
Content

1. Introduction CORENA
2. Data Validation
 - Creating Shipdex data
 - Receiving Shipdex data
3. Data Presentation
 - Virtual Publication
 - Interactive Electronical Technical Publication (IETP)
4. Conclusion

Data Validation – The Road to Success

Feature	Advantage	Benefit
Modularized content	Content may be reused Work may be shared	<ul style="list-style-type: none"> • Reduce costs for maintaining information • Faster time to market • Outsourcing non-core services • Faster time to market
Business Rules	Consistency	<ul style="list-style-type: none"> • Outsourcing non-core services • Faster time to market • Stream lined processes
Based on international Standard	Widely agreed	<ul style="list-style-type: none"> • Stream lined processes • Productivity gain

Creating Shipdex Data - Configuration



The screenshot shows the 'Configuration Suite [CSDB Settings]' application window. The interface is divided into several sections:

- Left Panel:** A vertical navigation menu with buttons for 'CSDB Settings', 'CSDB Organisation Settings', 'CSDB Customize Routines', 'Scheme Settings', 'Security Settings', 'Data Module Settings', 'Comment and IPRF S...', 'System Settings', 'Logo Settings', and 'Media Settings'.
- Top Panel:** A list of configuration items: 'ShipDex', 'MAN DIESEL' (highlighted), and 'BIKE 2.3 XML'.
- CSDB Details:** A form with the following fields:
 - Name: MAN DIESEL
 - Model Identification Code: MD21S40MEB
 - System Difference Code: AAAA
 - Information Code Set: Default S1000D 2.3 Shipdex Information Code Set
 - Item Location Set: Default Item Location Code Set
 - Language: English (EN)
 - Country: United Kingdom (Great Britain) (GB)
 - Organisation: MAN DIESEL
 - Juridically Responsible: (empty)
 - Category: MAN
 - SubCategory: DEMO
 - Brex Reference: MD21S40MEB-AAAA-HA0-00-0000-00000-022A-D (with a 'Select' button)
- Configuration Variant:** A section with checkboxes for different versions:
 - S1000DIssue1.8
 - S1000DIssue2.0
 - S1000DIssue2.2
 - S1000DIssue2.3
 - FMVBasDTD

Creating Shipdex Data – Meta Data

DMC/PMC	Issue No	TechName	InfoName
MD21540MEB-AAAA-HA1-51-1442-01000-941A-A	001	2572-0300 CONNECTING ROD BEARING#540MEB	Illustrated PartsData - IPD
MD21540MEB-AAAA-HA1-51-1446-00000-941A-A	001	2572-0200 CROSSHEAD BEARING#540MEB	Illustrated PartsData - IPD
MD21540MEB-AAAA-HA1-51-1810-02000-941A-A	001	7072-1100 ANGLE ENCODER#540MEB	Illustrated PartsData - IPD
MD21540MEB-AAAA-HA1-51-2210-00000-941A-A	001	2272-0600 - CYLINDER LINER#540MEB	Illustrated PartsData - IPD
MD21540MEB-AAAA-HA1-51-2214-00000-913A-A	001	Cylinder cover	General Maintenance
MD21540MEB-AAAA-HA1-51-2214-00000-941A-A	001	2272-0300 CYLINDER COVER#540MEB	Illustrated PartsData - IPD
MD21540MEB-AAAA-HA1-51-2222-00000-941A-A	001	2272-0200 EXH. VALVE, UPPER PART#540MEB	Illustrated PartsData - IPD
MD21540MEB-AAAA-HA1-51-2222-01000-941A-A	001	2272-0210 EXH. VALVE, LOWER PART#540MEB	Illustrated PartsData - IPD
MD21540MEB-AAAA-HA1-51-2222-02000-941A-A	001	2272-0320 EXH. VALVE, DETAIL#540MEB	Illustrated PartsData - IPD
MD21540MEB-AAAA-HA1-51-2226-00000-941A-A	001	2272-0240 EXH. VALVE PIPE#540MEB	Illustrated PartsData - IPD
MD21540MEB-AAAA-HA1-51-2234-00000-310A-A	001	Piston	Visual Examination
MD21540MEB-AAAA-HA1-51-2234-00000-913A-A	001	Piston	General Maintenance
MD21540MEB-AAAA-HA1-51-2234-00000-920A-A	001	Piston	Change
MD21540MEB-AAAA-HA1-51-2234-00000-941A-A	001	2272-0400 - PISTON#540MEB	Illustrated PartsData - IPD
MD21540MEB-AAAA-HA1-51-2238-00000-941A-A	001	2272-0420 - PISTON RINGS#540MEB	Illustrated PartsData - IPD
MD21540MEB-AAAA-HA1-51-2614-00000-941A-A	001	1472-0500 CHAIN TIGHT. FOR CAMSH#540MEB	Illustrated PartsData - IPD

TechName	7072-1100 ANGLE ENCODER#540MEB
InfoName	Illustrated Parts Data - IPD
DMC Type	AVEE
DM Identifier	IPD
ORIG	MAN DIESEL
RPC	MAN DIESEL

Creating Shipdex Data - References

DMC/PMC	Issue No	TechName	InfoName
MD21540MEB-AAAA-HA1-51-1442-01000-941A-A	001	2572-0300 CONNECTING ROD BEARING#540MEB	Illustrated PartsData - IPD
MD21540MEB-AAAA-HA1-51-1446-00000-941A-A	001	2572-0200 CROSSHEAD BEARING#540MEB	Illustrated PartsData - IPD
MD21540MEB-AAAA-HA1-51-1810-02000-941A-A	001	7072-1100 ANGLE ENCODER#540MEB	Illustrated PartsData - IPD
MD21540MEB-AAAA-HA1-51-2210-00000-941A-A	001	2272-0600 - CYLINDER LINER#540MEB	Illustrated PartsData - IPD
MD21540MEB-AAAA-HA1-51-2214-00000-913A-A	001	Cylinder cover	General Maintenance
MD21540MEB-AAAA-HA1-51-2214-00000-941A-A	001	2272-0300 CYLINDER COVER#540MEB	Illustrated PartsData - IPD
MD21540MEB-AAAA-HA1-51-2222-00000-941A-A	001	2272-0200 EXH. VALVE, UPPER PART#540MEB	Illustrated PartsData - IPD
MD21540MEB-AAAA-HA1-51-2222-01000-941A-A	001	2272-0210 EXH. VALVE, LOWER PART#540MEB	Illustrated PartsData - IPD
MD21540MEB-AAAA-HA1-51-2222-02000-941A-A	001	2272-0320 EXH. VALVE, DETAIL#540MEB	Illustrated PartsData - IPD
MD21540MEB-AAAA-HA1-51-2226-00000-941A-A	001	2272-0240 EXH. VALVE PIPE#540MEB	Illustrated PartsData - IPD
MD21540MEB-AAAA-HA1-51-2234-00000-310A-A	001	Piston	Visual Examination
MD21540MEB-AAAA-HA1-51-2234-00000-913A-A	001	Piston	General Maintenance
MD21540MEB-AAAA-HA1-51-2234-00000-920A-A	001	Piston	Change
MD21540MEB-AAAA-HA1-51-2234-00000-941A-A	001	2272-0400 - PISTON#540MEB	Illustrated PartsData - IPD
MD21540MEB-AAAA-HA1-51-2238-00000-941A-A	001	2272-0420 - PISTON RINGS#540MEB	Illustrated PartsData - IPD
MD21540MEB-AAAA-HA1-51-2614-00000-941A-A	001	1472-0500 CHAIN TIGHT. FOR CAMSH#540MEB	Illustrated PartsData - IPD

ICN	Issue No	WF State
ICN-MD21540MEB-AAAA-HA1511810-A-R1594-00002-A-01-A	01	For Revision

Creating Shipdex Data - Authoring

Receiving Shipdex Data

Dataset Status View

Status for R1594-prototype1-S40ME-B

Validation

Go Up Run Open report Open report in excel

Not refreshing
 Overall progress:
100%

Task ID	Progress	Completion	Details	Actions
Links	100% ERROR	ENDED	More details	
Content	100% OK	ENDED	More details	

Receiving Shipdex Data - Links

Dataset Status

View

Status for R1594-prototype1-S40ME-B

Links

Go Up

Run

Open report

Open report in excel

Not refreshing

Overall progress:

100%

Task ID	Progress	Completion	Details	Actions
SNS Check	100% OK	ENDED	More details	
Reference to data modules check	100% OK	ENDED	More details	
Reference to technical publications check	100% OK	ENDED	More details	
WellFormed Check	100% OK	ENDED	More details	
DML Check	100% OK	ENDED	More details	
IC=019 Check	100% ERROR	ENDED	More details	
ICN Check	100% OK	ENDED	More details	
DM Infoset Check	100% OK	ENDED	More details	

Receiving Shipdex Data - Content

Dataset Status	View			
74:Step id should be in format SXXX, where X is a number	100%	OK	ENDED	
75:Reference to step should be in format SXXX, where X is a number	100%	OK	ENDED	
76:Table id should be in format TXXX, where X is a number	100%	OK	ENDED	
77:Reference to table should be in format TXXX, where X is a number	100%	OK	ENDED	
78:Supequi id should be in format SEXXX, where X is a number	100%	OK	ENDED	
79:Reference to supequip should be in format SEXXX, where X is a number	100%	OK	ENDED	
80:Supply id should be in format SUXXX, where X is a number	100%	OK	ENDED	
81:Reference to supply should be in format SUXXX, where X is a number	100%	OK	ENDED	
82:Spare id should be in format SPXXX, where X is a number	100%	OK	ENDED	
83:Reference to spare should be in format SPXXX, where X is a number	100%	OK	ENDED	
84:Attribute frame of element table must be one of: top, bottom, topbot, all, sides, none	100%	OK	ENDED	
85:Attribute orient of element table must be one of: land, port	100%	OK	ENDED	
86:Attribute pgwide of element table must be one of: 0, 1	100%	OK	ENDED	
87:Element pmd is mandatory	100%	OK	ENDED	
88:Element pmd must contain mandatory element thi	100%	OK	ENDED	
89:The attribute uom in element thi should correspond to units of measurement table	100%	OK	ENDED	

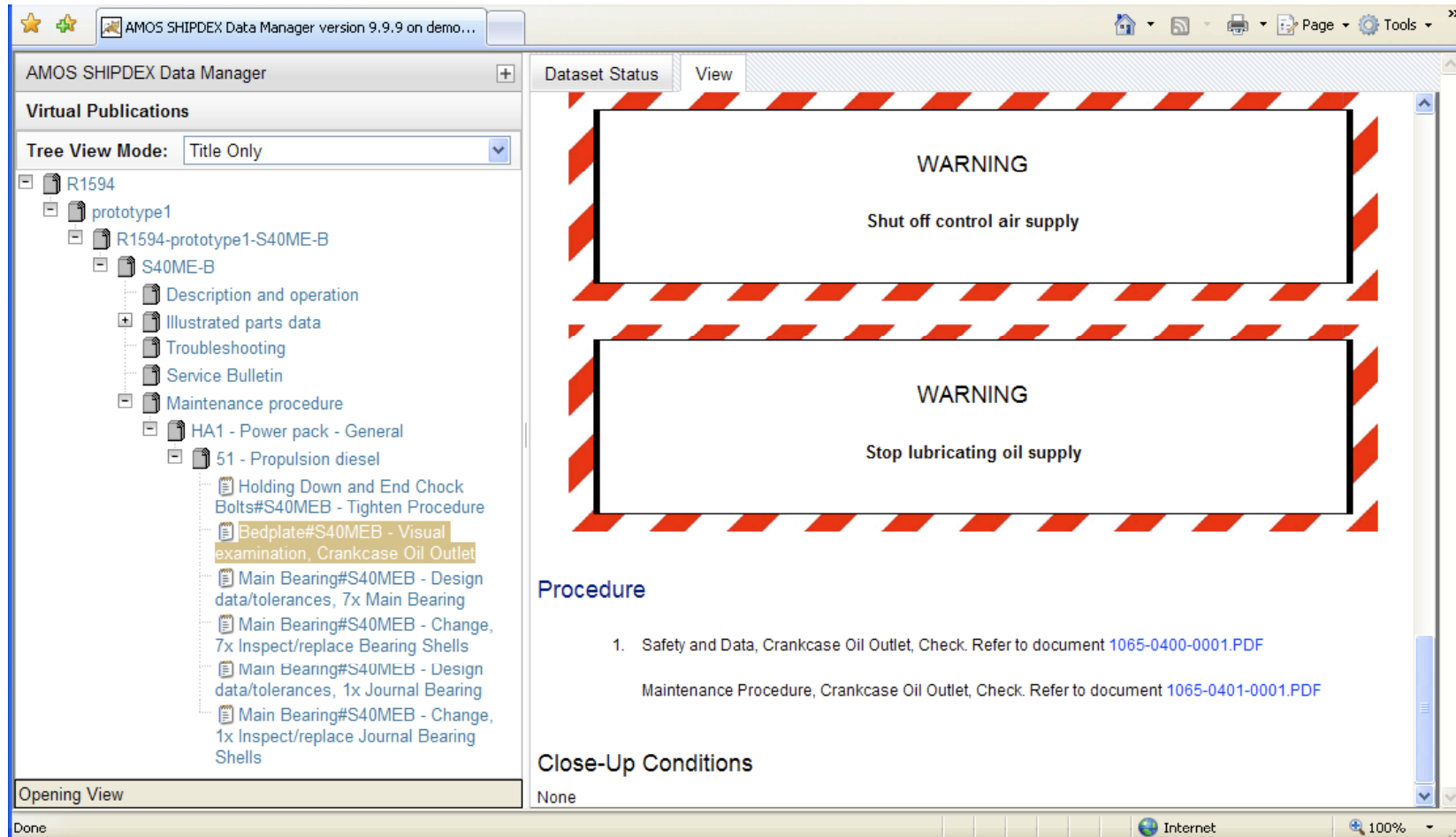
Content

1. Introduction CORENA
2. Data Validation
 - ❑ Creating Shipdex data
 - ❑ Receiving Shipdex data
3. Data Presentation
 - ❑ Virtual Publication
 - ❑ Interactive Electronical Technical Publication (IETP)
4. Conclusion

Data Presentation – New Opportunities

Feature	Advantage	Benefit
XML based - Separation of presentation and information	The information is long-living	<ul style="list-style-type: none"> • Future proof investment
	A presentation per customer feasible (corporate identity)	<ul style="list-style-type: none"> • Less training effort in using the documentation
XML based - Granular information	Interactive presentation	<ul style="list-style-type: none"> • Productivity gain

Virtual Publication



AMOS SHIPDEX Data Manager version 9.9.9 on demo...

AMOS SHIPDEX Data Manager

Virtual Publications

Tree View Mode: Title Only

- R1594
 - prototype1
 - R1594-prototype1-S40ME-B
 - S40ME-B
 - Description and operation
 - Illustrated parts data
 - Troubleshooting
 - Service Bulletin
 - Maintenance procedure
 - HA1 - Power pack - General
 - 51 - Propulsion diesel
 - Holding Down and End Check Bolts#S40MEB - Tighten Procedure
 - Bedplate#S40MEB - Visual examination, Crankcase Oil Outlet
 - Main Bearing#S40MEB - Design data/tolerances, 7x Main Bearing
 - Main Bearing#S40MEB - Change, 7x Inspect/replace Bearing Shells
 - Main Bearing#S40MEB - Design data/tolerances, 1x Journal Bearing
 - Main Bearing#S40MEB - Change, 1x Inspect/replace Journal Bearing Shells

Opening View

Done

Dataset Status View

WARNING
Shut off control air supply

WARNING
Stop lubricating oil supply

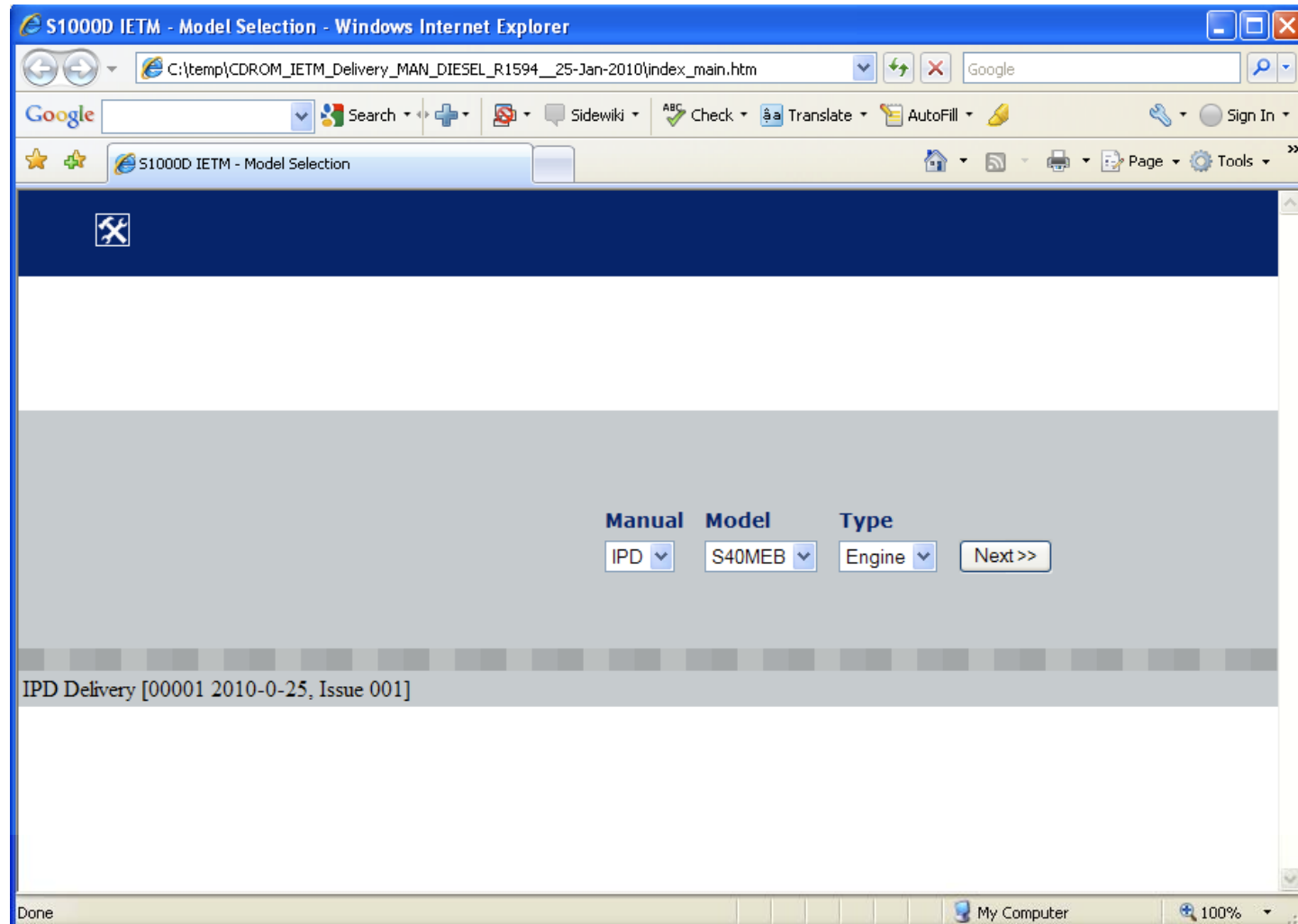
Procedure

1. Safety and Data, Crankcase Oil Outlet, Check. Refer to document [1065-0400-0001.PDF](#)
Maintenance Procedure, Crankcase Oil Outlet, Check. Refer to document [1065-0401-0001.PDF](#)

Close-Up Conditions
None

Internet 100%

IETP



IETP

The screenshot shows the IPD software interface. The left sidebar contains a tree view of folders and files, including 'IPD', 'DEMO - General data', and various 'Data - IPD' files. The main content area displays two warning messages in red-bordered boxes with diagonal stripes:

WARNING
Shut off starting air distributor/distributing system supply

WARNING
Shut off safety air supply, Not ME engines

Procedure

- Safety and Data, Piston, Check. Refer to document 2265-0400-0001.PDF
Maintenance Procedure, Piston, Check. Refer to document 2265-0401-0001.PDF

Ref.	Description	Value	Unit
T22-73	Vertical clearance, new parts	0.32	mm
T22-74	Vertical clearance, worn parts, max.	0.82	mm
T22-69	CPR ring CL groove, min depth	0.9	mm

Interactive PDF

NATO Unclassified MD21K98ME8-N4711-00001-01

Change

Preliminary requirements

Production management data

Threshold interval 0 th99

Required conditions

Table 1 Required conditions

Action/Condition	Data module/Technical publication
None	

Support equipment

Table 2 Support equipment

Name	Identification/Reference	Quantity	Remark
Torque wrench, 8–40 Nm	CSN/ISN HA1–51–9058–01 –015 /00A1 pc		
Adapter for socket wrench, 12.5/10	CSN/ISN HA1–51–9058–01 –027 /00A1 pc		
Torque wrench, 40–200 Nm	CSN/ISN HA1–51–9058–01 –039 /00A1 pc		
Torque wrench, 140–760 Nm	CSN/ISN HA1–51–9058–01 –040 /00A1 pc		
Hydraulic jack	CSN/ISN HA1–51–9410–00 –015 /00A1 pc		
Support for hydraulic jack	CSN/ISN HA1–51–9410–00 –027 /00A1 pc		
Ball handle	CSN/ISN HA1–51–9410–00 –040 /00A1 pc		
Hex key	CSN/ISN HA1–51–9410–00 –088 /00A1 pc		
Stud setter	CSN/ISN HA1–51–9410–00 –100 /00A1 pc		
Pump, pneumatic and hydraulic	CSN/ISN HA1–51–9058–00 –011 /00A1 pc		

This is a draft copy of Issue 001.01
Print file generated 2010-02-01 13:44

MD21S40MEB-AAAA-HA1-51-2234-00000-920A-A

NATO Unclassified 2008-09-11 Page 1

Interactive PDF

NATO Unclassified MD21K98ME8-N4711-00001-01

Maintenance Procedure, Fuel Oil high-pressure pipe, Dismantling. Refer to document 4265-0101-0001.PDF

Ref.	Description	Value	Unit
T42-6	Fuel oil pipe	8	Kg

2 Safety and Data, Exhaust valve High-Pressure Pipe, Dismantling. Refer to document 2265-0100-0001.PDF

Maintenance Procedure, Exhaust valve High-Pressure Pipe, Dismantling. Refer to document 2265-0101-0001.PDF

Ref.	Description	Value	Unit
T22-3	High-Pressure Pipe	22	kg

3 Safety and Data, Cylinder Cover, Dismantling. Refer to document 2265-0300-0001.PDF

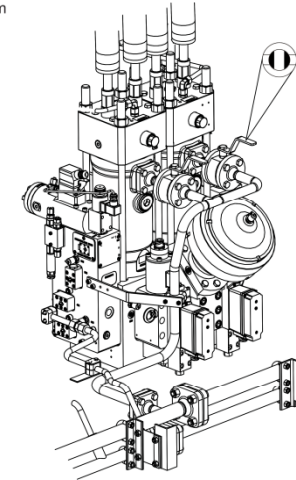
Maintenance Procedure, Cylinder Cover, Dismantling. Refer to document 2265-0301-0001.PDF

Ref.	Description	Value	Unit
T76-1	Hydraulic pressure, dismantling	1450 -1650	bar
T22-46	Cylinder cover, complete	950	Kg



High-Pressure Pipe with Double Pipe

1. Close the fuel oil inlet valve.
2. Unscrew the union nipple from the fuel valve.



4265-0101-0001D01



Fuel Oil High-Pressure Pipe • Dismantling

Work Card
4265-0101-0001.0

draft copy of issue 001:01
generated 2010-02-01 13:44

2007-10-15



Content

1. Introduction CORENA
2. Data Validation
 - Creating Shipdex data
 - Receiving Shipdex data
3. Data Presentation
 - Virtual Publication
 - Interactive Electronical Technical Publication (IETP)
4. Conclusion

Conclusion

- Shipdex adds value to your business
- Data validation is the key factor for successfully implementing Shipdex projects
- Use modern ways of displaying information to leverage the granularity of Shipdex data